

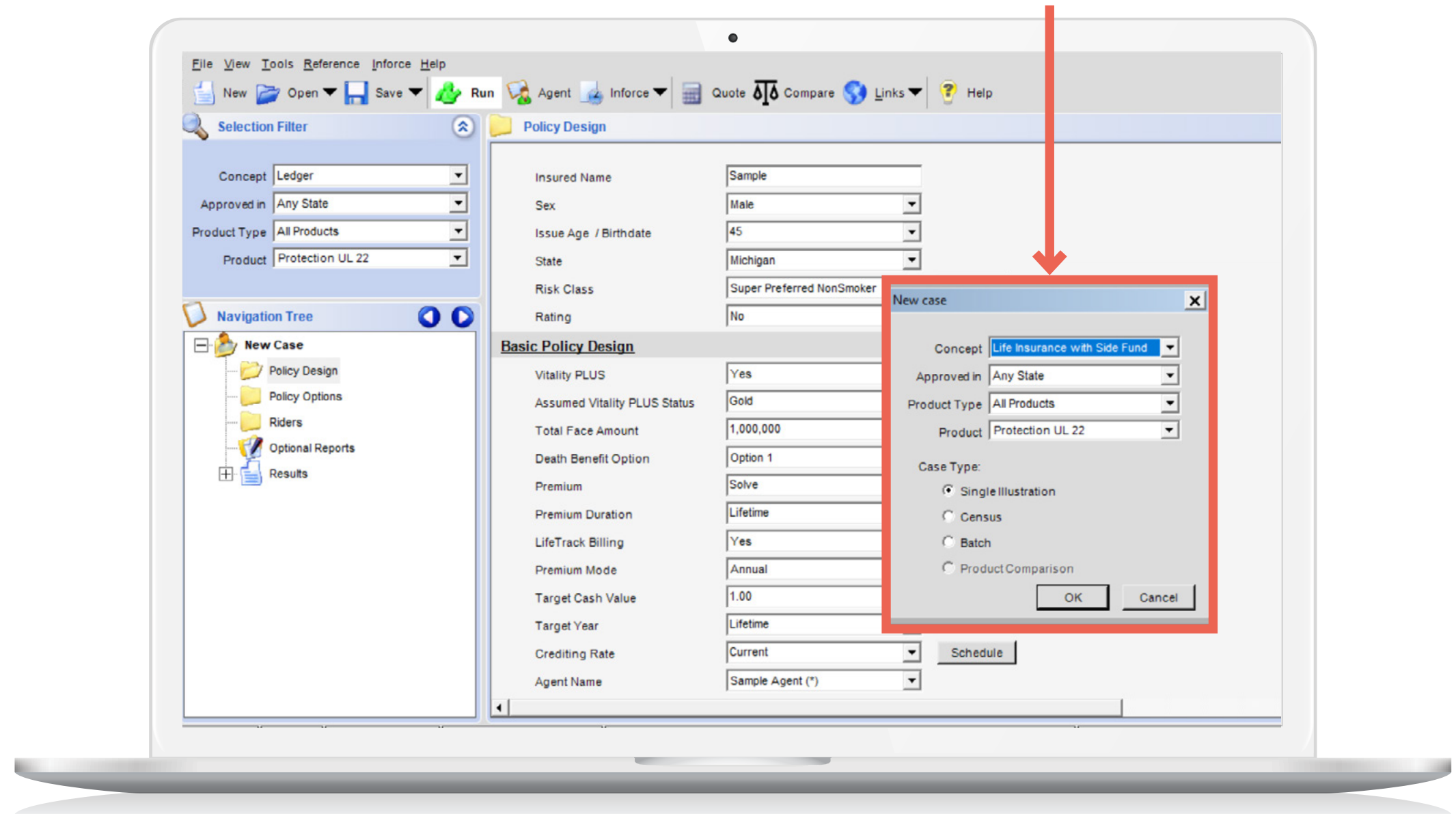


# Life Insurance with a Side Fund Concept

Our new Life Insurance with a Side Fund Concept is designed to show the power of combining a cost-effective, protection-based life insurance product, with external investments that can offer growth potential. The concept can be used with different funding patterns and scenarios to show how combining these assets can result in a comprehensive financial plan.

## Get started

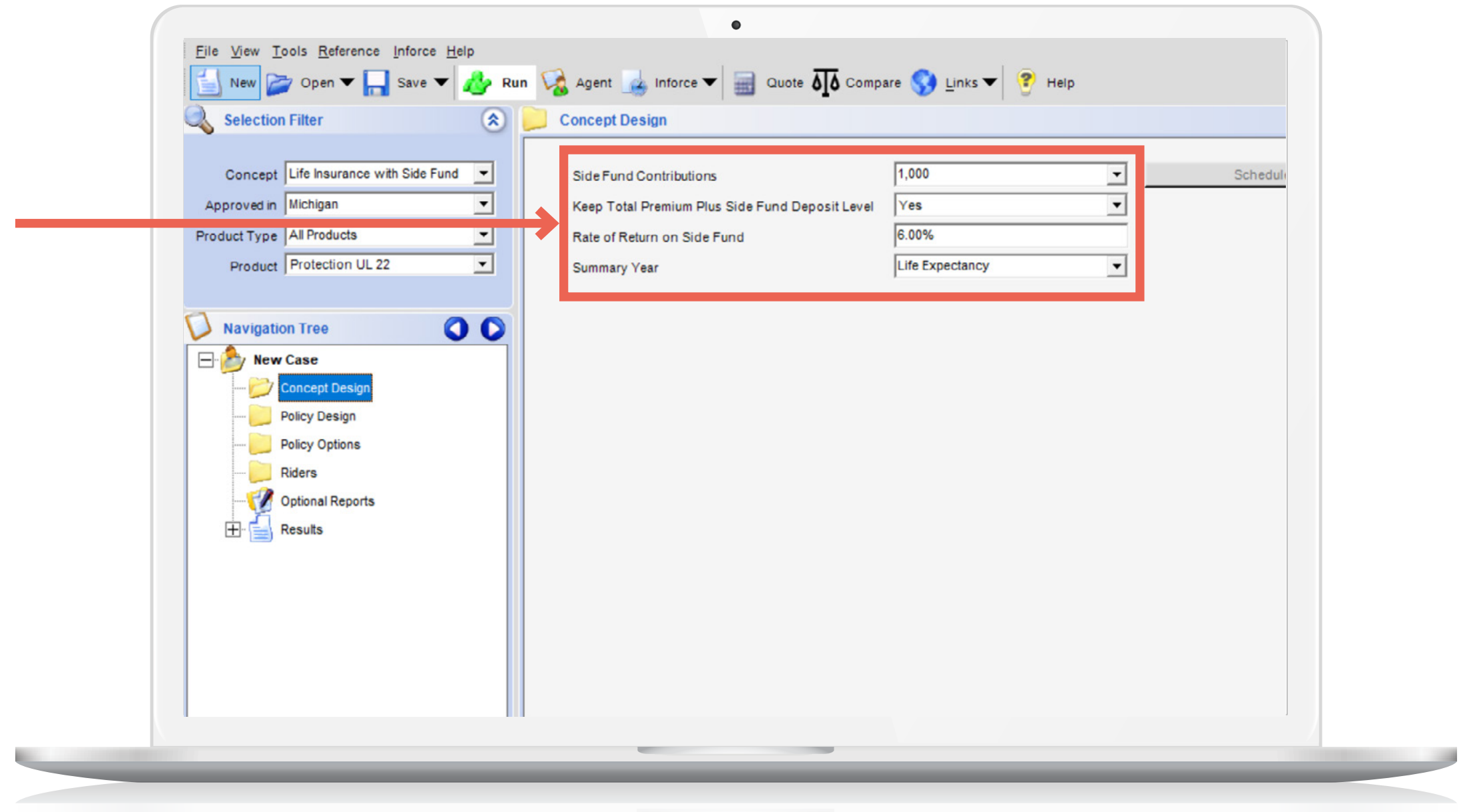
To access the concept, choose **Life Insurance with Side Fund** in the **Concept** section on JH Illustrator.



## Select your scenarios

Once the concept is selected, you can choose:

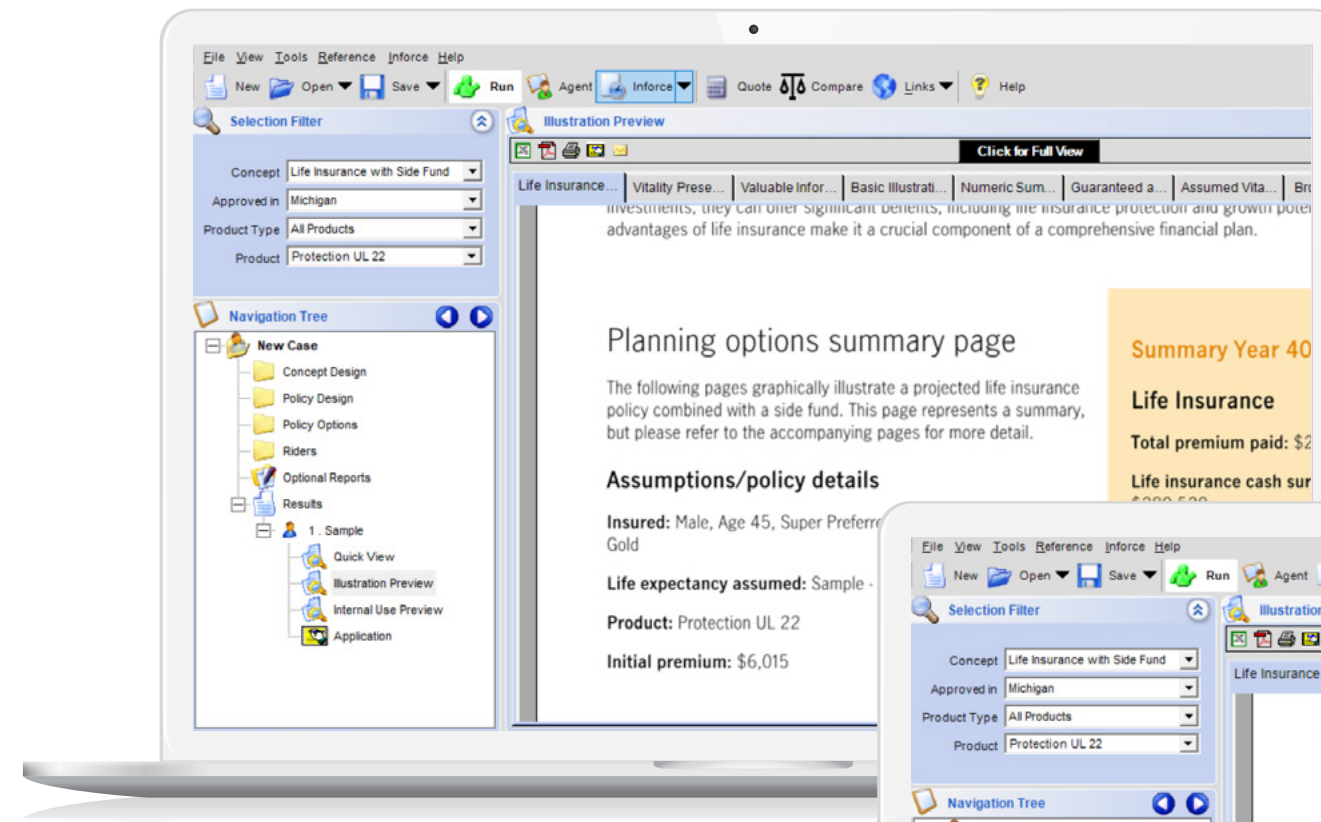
- Different **side fund contributions** and **schedules**
- Whether you want the total premium and side fund outlay to remain level
- The side fund growth rate
- The summary year for the report



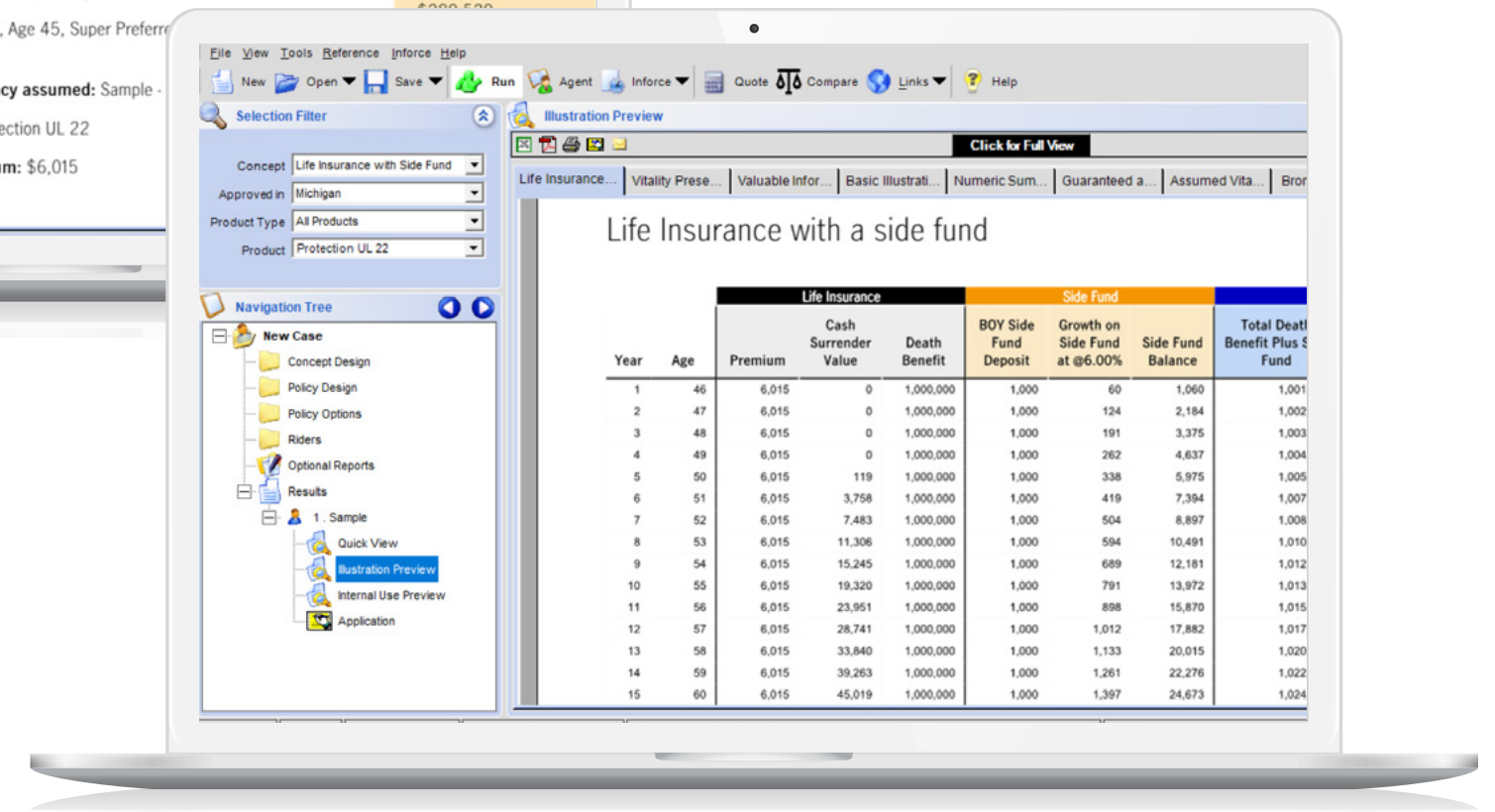
## Dive into the details

Once the design is selected and run, the report will be generated showing the value of combining life insurance protection and the side fund value, and the rate of return on the total amount contributed.

This will be included both in a **summary view**, and a **year-by-year ledger**.



Summary view



Year-by-year ledger

## Give it a try

Leverage our new Life Insurance with a Side Fund Concept to show these benefits on your next case! If you have any questions, please call the National Sales Desk at **888-266-7498, option 2.**